

FLAGLER COUNTY EMERGENCY DUNE RESTORATION 2017 POST-MATTHEW

FLAGLER COUNTY, FLORIDA



VICINITY MAP

1" = 4,000' (22"x34")
1" = 8,000' (11"x17")

REFERENCE:
USGS 7.5' QUADRANGLE MAP,
MATANZAS INLET, FLORIDA 1992
BEVERLY BEACH, FLORIDA 1992
FLAGLER BEACH WEST, FLORIDA 1993
FLAGLER BEACH EAST, FLORIDA 1993

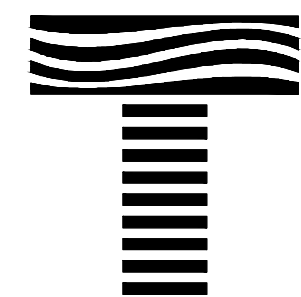
DRAWING INDEX

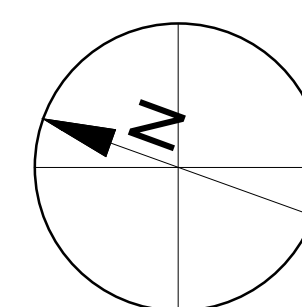
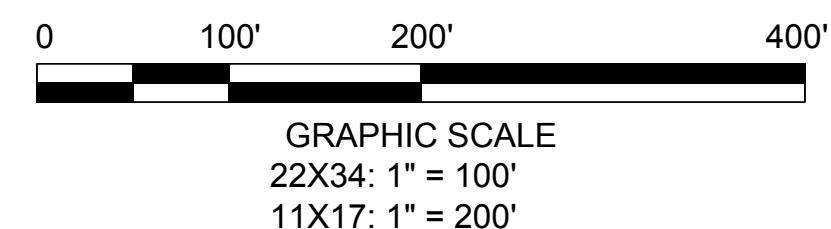
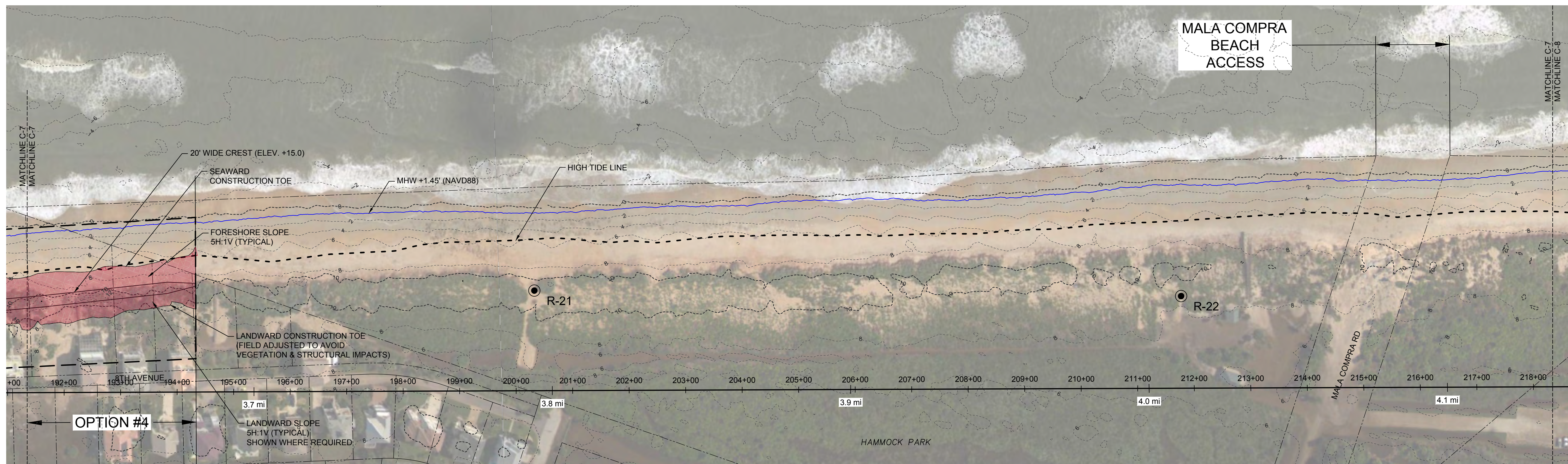
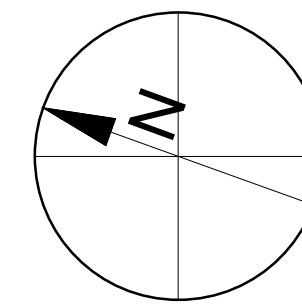
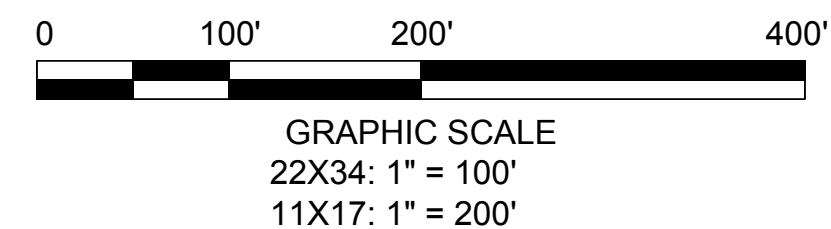
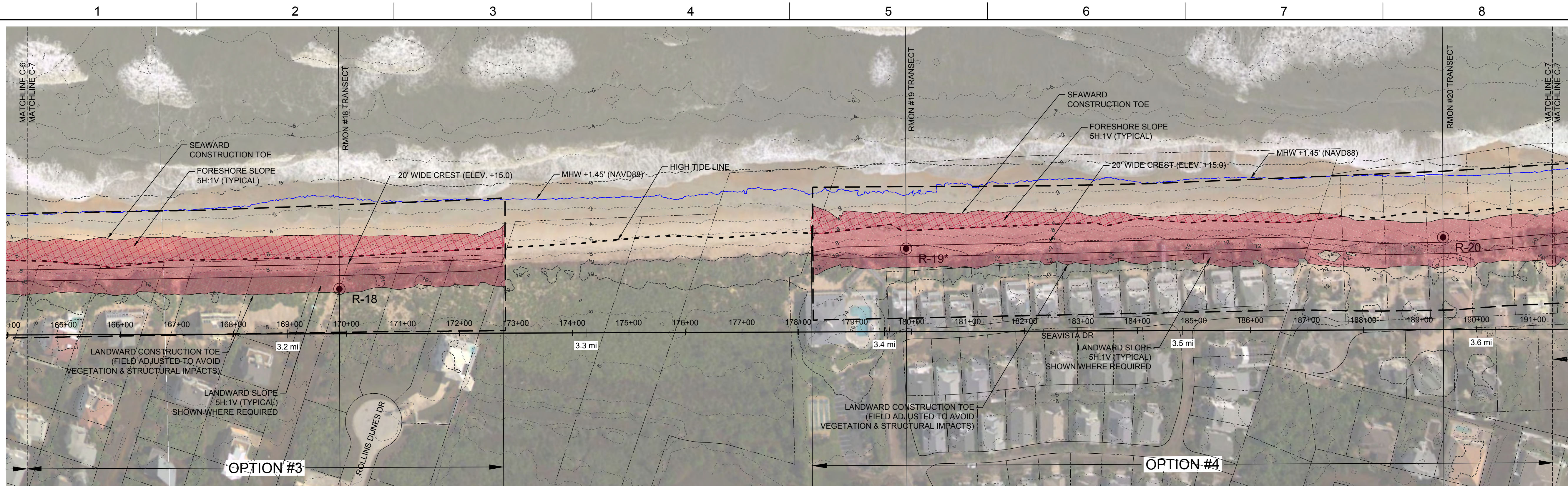
- C-1 TITLE SHEET
- C-2.1 DUNE RESTORATION OVERVIEW R-1 TO T-44
- C-2.2 DUNE RESTORATION OVERVIEW T-44 TO R-100
- C-2.3 PROJECT OVERVIEW
- C-3 TYPICAL DUNE RESTORATION DETAILS
- C-4 SITE PLAN R-1 TO R-6
- C-5 SITE PLAN R-7 TO R-11
- C-6 SITE PLAN R-12 TO R-17
- C-7 SITE PLAN R-18 TO R-22
- C-8 SITE PLAN R-23 TO R-28
- C-9 SITE PLAN R-29 TO R-34
- C-10 SITE PLAN R-35 TO R-36
- C-11 SITE PLAN R-48 TO R-54
- C-12 SITE PLAN R-55 TO R-59
- C-13 SITE PLAN R-60 TO R-65
- C-14 SECTIONS R-5 TO R-19
- C-15 SECTIONS R-20 TO R-58
- C-16 SECTIONS R-59 TO R-64
- C-17 FDEP PLANTING DETAILS



LOCATION MAP

N.T.S.

 TAYLOR ENGINEERING INC. 10151 DEERWOOD PARK BLVD BLDG 300, SUITE 300 JACKSONVILLE, FLORIDA 32256 (904)-731-7040 <small>CERTIFICATE OF AUTHORIZATION # 4815</small>	PROJECT TITLE FLAGLER COUNTY EMERGENCY DUNE RESTORATION 2017 POST-MATTHEW FLAGLER COUNTY, FLORIDA		SEAL KENNETH R. CRAIG II P.E.# 52605 C-1
	PROJECT NO C2016-079	DATE MAY 15, 2017	



LEGEND

	CONSTRUCTION BASELINE STATION
	EXISTING CONTOUR
	HIGH TIDE LINE
	MEAN HIGH WATER LINE
	DUNE FILL
	DUNE FILL BEYOND HIGH TIDE LINE
	RANGE MONUMENT

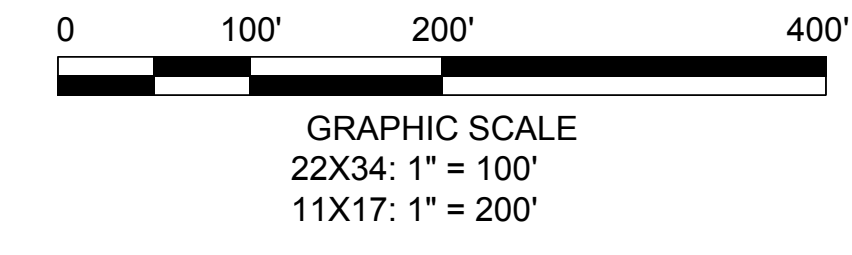
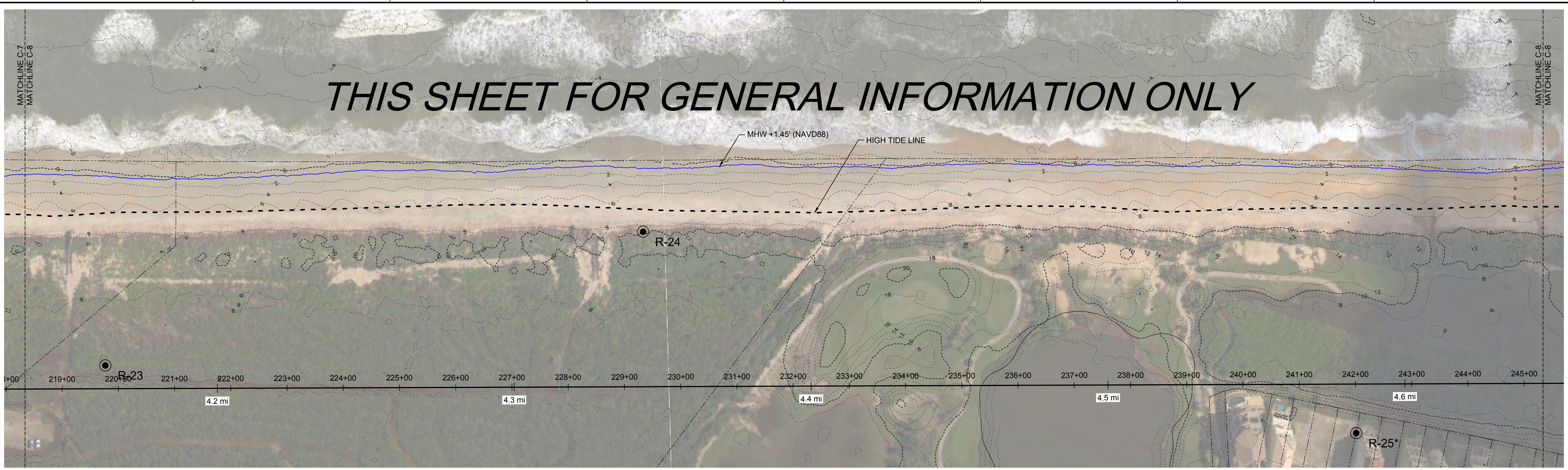
NO.	ZONE	REVISIONS / SUBMISSIONS	DATE

PROJECT NO	C2016-079
DATE	MAY 15, 2017
DESIGNED	KRC
DRAWN	CAS
CHECKED	RLJ
REVIEWED	HVC
SCALE	AS SHOWN

DRAWING TITLE
**SITE PLAN
 R-18 TO R-22**

CATHY SHELL 5/15/2017 5:10:59 PM X:\sys\Projects\2016-079 Flagler Coastal Seawall\Permit DuneRepair\2016-079-P-EDP-R3-305 Dune Site.dwg

THIS SHEET FOR GENERAL INFORMATION ONLY



TAYLOR ENGINEERING INC.
 10151 DEERWOOD PARK BLVD
 BLDG 300, SUITE 300
 JACKSONVILLE, FLORIDA 32256
 (904)-731-7040

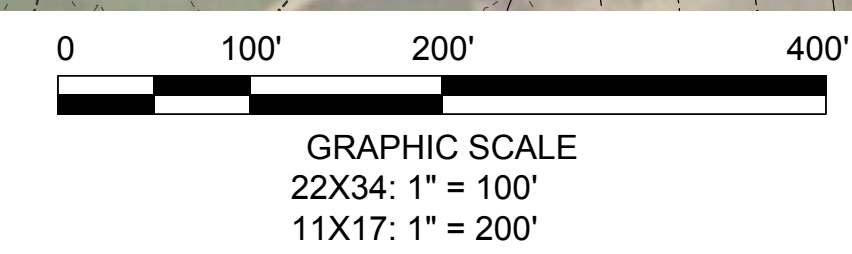
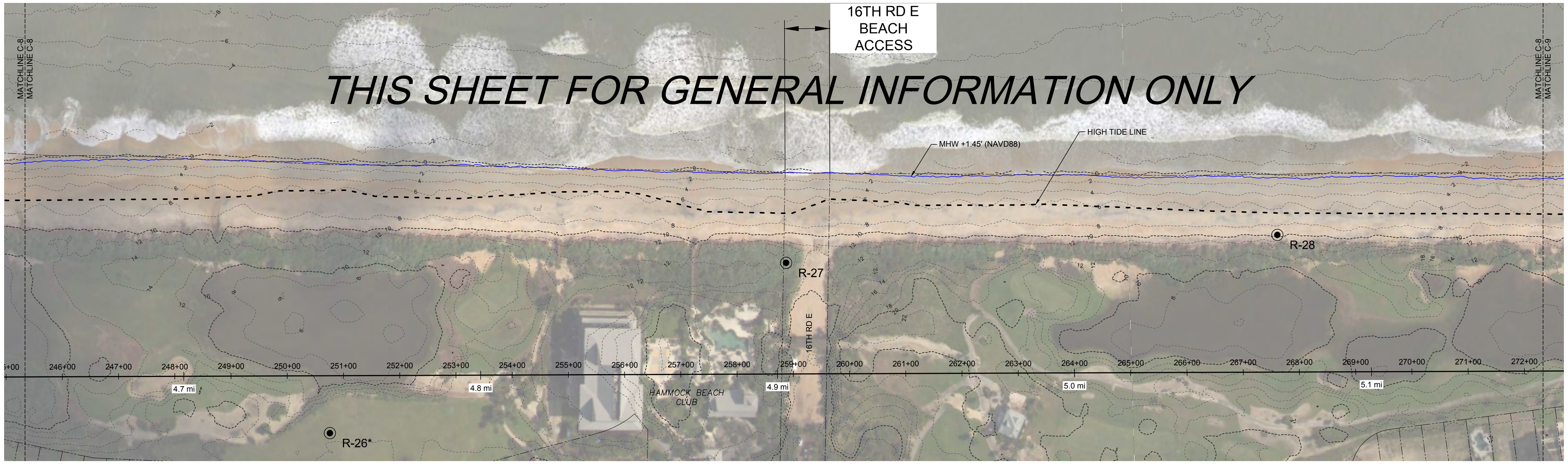
CERTIFICATE OF AUTHORIZATION # 4815

KENNETH R. CRAIG II P.E.# 52605

PROJECT TITLE
**FLAGLER COUNTY
 EMERGENCY DUNE
 RESTORATION
 2017 POST-MATTHEW**
 FLAGLER COUNTY, FLORIDA

SUNSHINE STATE ONE CALL OF
 FLORIDA
 SUNSHINE 811 - ALWAYS CALL 811
 BEFORE YOU DIG
 1-800-638-4097

THIS SHEET FOR GENERAL INFORMATION ONLY



- LEGEND**
- 10+00 — CONSTRUCTION BASELINE STATION
 - EXISTING CONTOUR
 - - - HIGH TIDE LINE
 - MEAN HIGH WATER LINE
 - DUNE FILL
 - DUNE FILL BEYOND HIGH TIDE LINE
 - R-2 RANGE MONUMENT

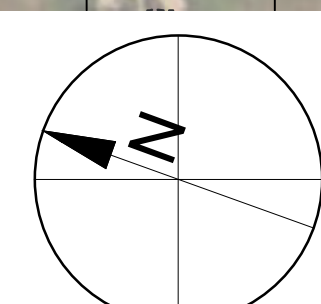
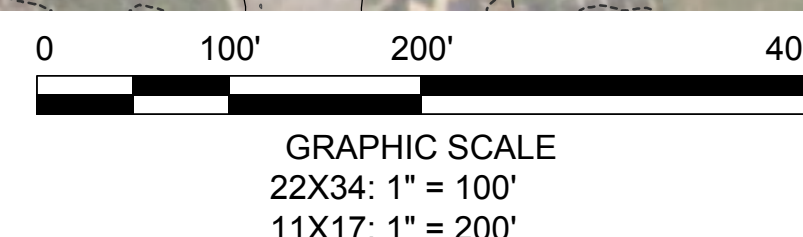
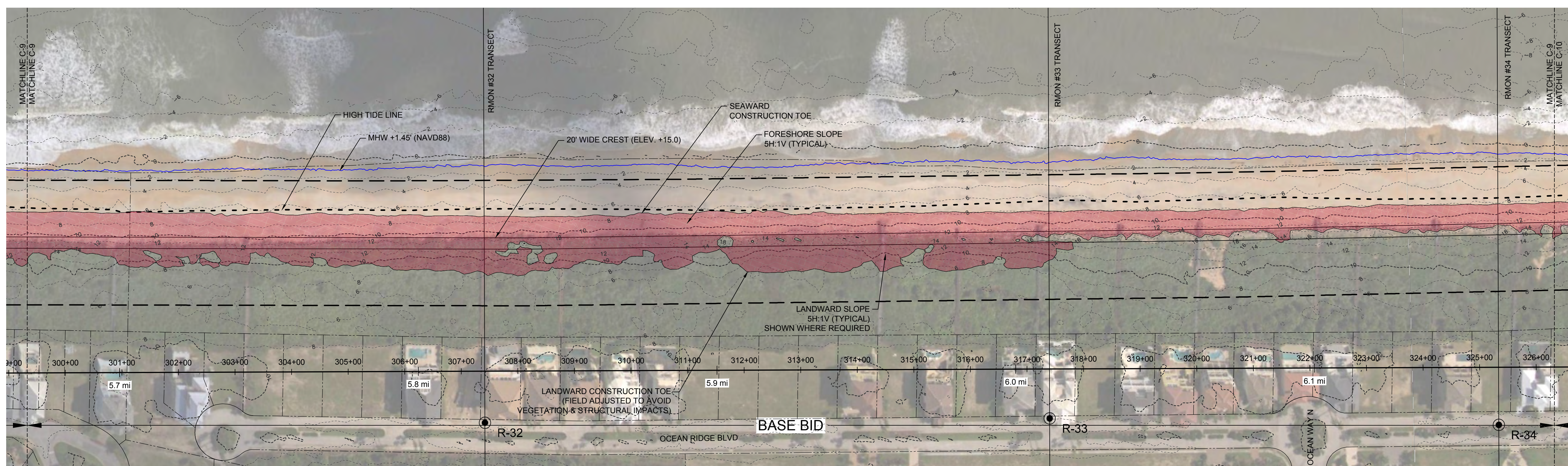
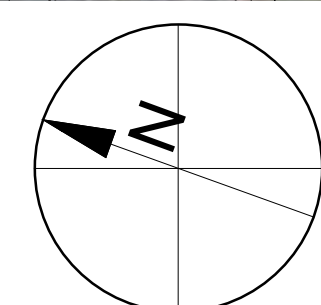
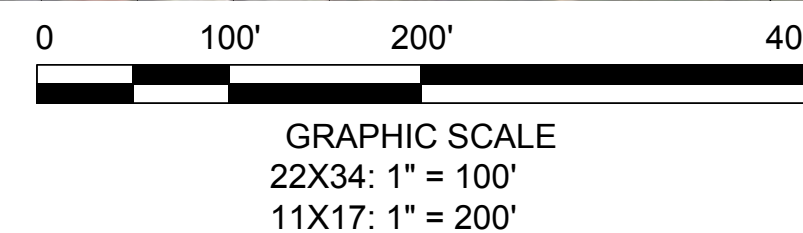
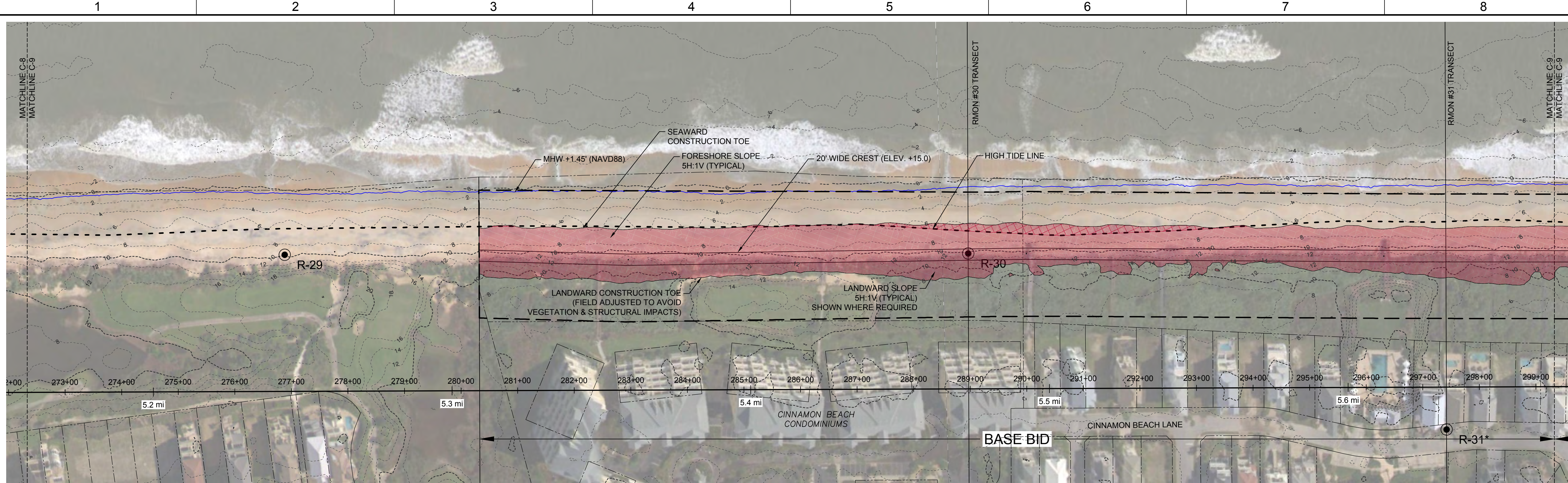
PROJECT NO	C2016-079
DATE	MAY 15, 2017
DESIGNED	KRC
DRAWN	CAS
CHECKED	RLJ
REVIEWED	HVC
SCALE	AS SHOWN

DRAWING TITLE
**SITE PLAN
 R-23 TO R-28**

C-8

SHEET 10 OF 19

CATHY SHELL, 5/15/2017 5:11:05 PM, X:\ays\Projects\C2016-079 Flagler Coastal Sewer\Permit DuneRepair\C2016-079-P-FDEP-R3-R35 Dune Site.dwg



LEGEND

- CONSTRUCTION BASELINE STATION
- EXISTING CONTOUR
- HIGH TIDE LINE
- MEAN HIGH WATER LINE
- DUNE FILL
- DUNE FILL BEYOND HIGH TIDE LINE
- RANGE MONUMENT

TAYLOR ENGINEERING INC.
 10151 DEERWOOD PARK BLVD
 BLDG 300, SUITE 300
 JACKSONVILLE, FLORIDA 32256
 (904) 731-7040

CERTIFICATE OF AUTHORIZATION # 4815

KENNETH R. CRAIG II P.E. # 52605

**FLAGLER COUNTY
 EMERGENCY DUENE
 RESTORATION
 2017 POST-MATTHEW**

FLAGLER COUNTY, FLORIDA

SUNSHINE STATE ONE CALL OF
 FLORIDA
 SUNSHINE 811 - ALWAYS CALL 811
 BEFORE YOU DIG
 1-800-638-4097

NO.	ZONE	REVISIONS / SUBMISSIONS	DATE

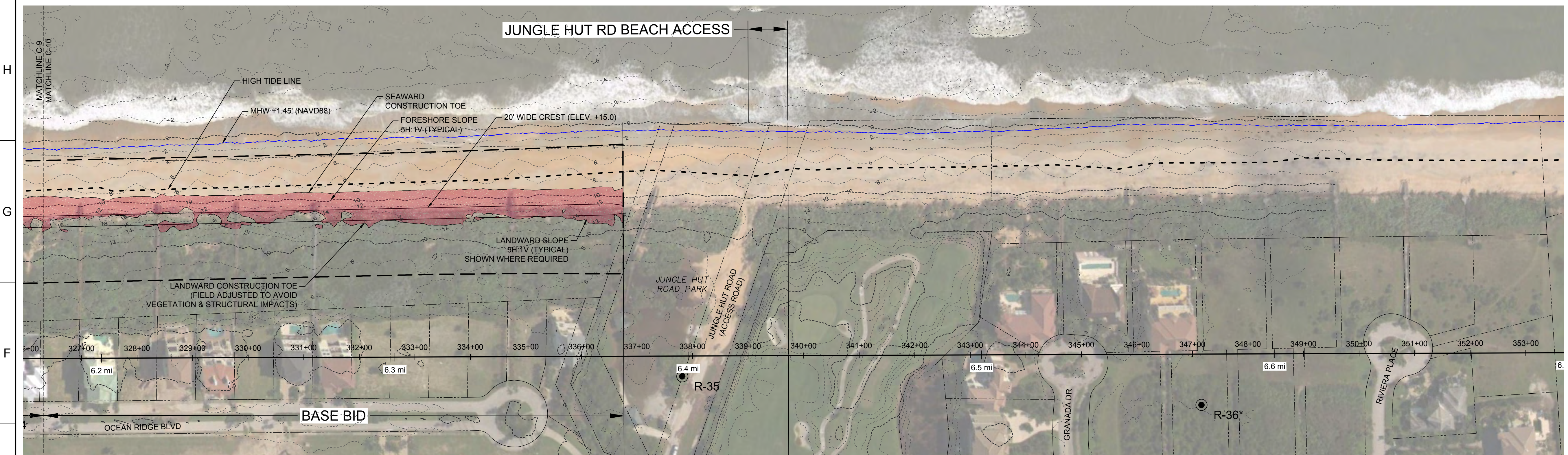
PROJECT NO	C2016-079
DATE	MAY 15, 2017
DESIGNED	KRC
DRAWN	CAS
CHECKED	RLJ
REVIEWED	HVC
SCALE	AS SHOWN

**SITE PLAN
 R-29 TO R-34**

C-9
 SHEET 11 OF 19

CATHY SHELL, 5/15/2017 5:11:11 PM, X:\s\Projects\2016-079 Flagler Coastal Seawall Permit DuneRepair\2016-079-P-FDEP-R3-B38 Dune Site.dwg

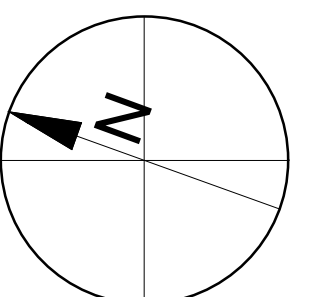
JUNGLE HUT RD BEACH ACCESS



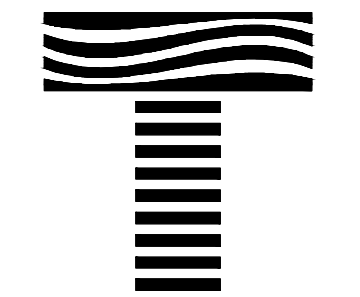
- LEGEND**
- +00--- CONSTRUCTION BASELINE STATION
 - EXISTING CONTOUR
 - - - - - HIGH TIDE LINE
 - MEAN HIGH WATER LINE
 - [Red shaded area] DUNE FILL
 - [Red hatched area] DUNE FILL BEYOND HIGH TIDE LINE
 - R-2 RANGE MONUMENT



GRAPHIC SCALE
22X34: 1" = 100'
11X17: 1" = 200'



CATHY SHELL, 5/15/2017 5:11:15 PM, X:\s\Projects\C2016-079 Flagler Coastal Seawall\Permit DuneRepair\C2016-079-P-FDEP-R3-R35 Dune Site.dwg



TAYLOR ENGINEERING INC.
10151 DEERWOOD PARK BLVD
BLDG 300, SUITE 300
JACKSONVILLE, FLORIDA 32256
(904)-731-7040

CERTIFICATE OF AUTHORIZATION # 4815

SEAL

KENNETH R. CRAIG II P.E.# 52605

PROJECT TITLE

**FLAGLER COUNTY
EMERGENCY DUNE
RESTORATION
2017 POST-MATTHEW**

FLAGLER COUNTY, FLORIDA

SUNSHINE STATE ONE CALL OF
FLORIDA
SUNSHINE 811 - ALWAYS CALL 811
BEFORE YOU DIG
1-800-638-4097

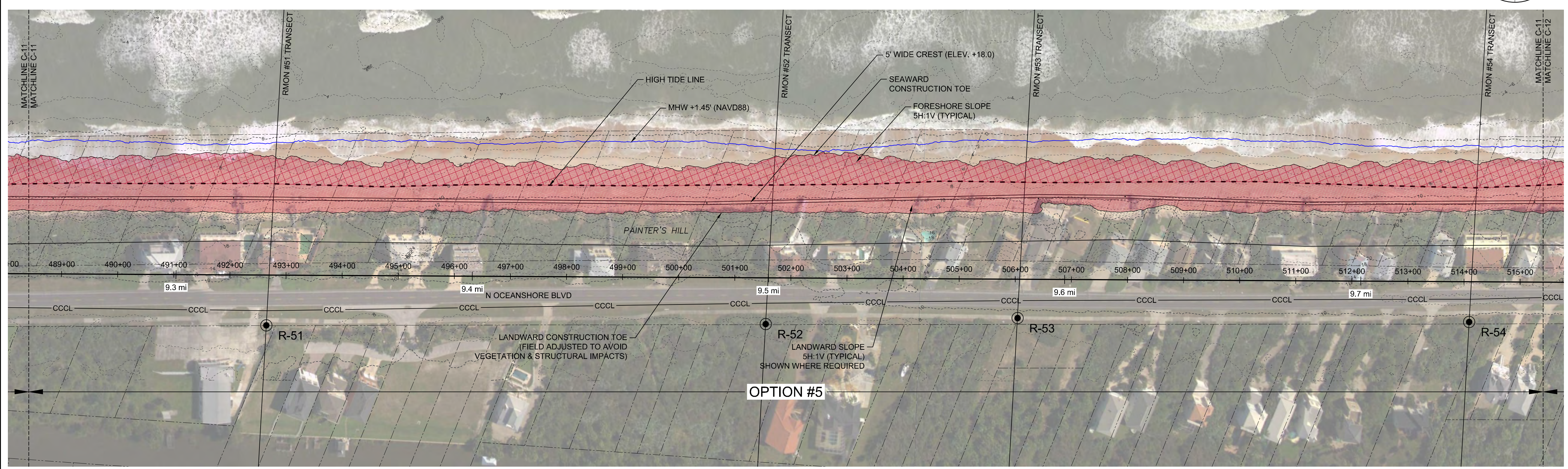
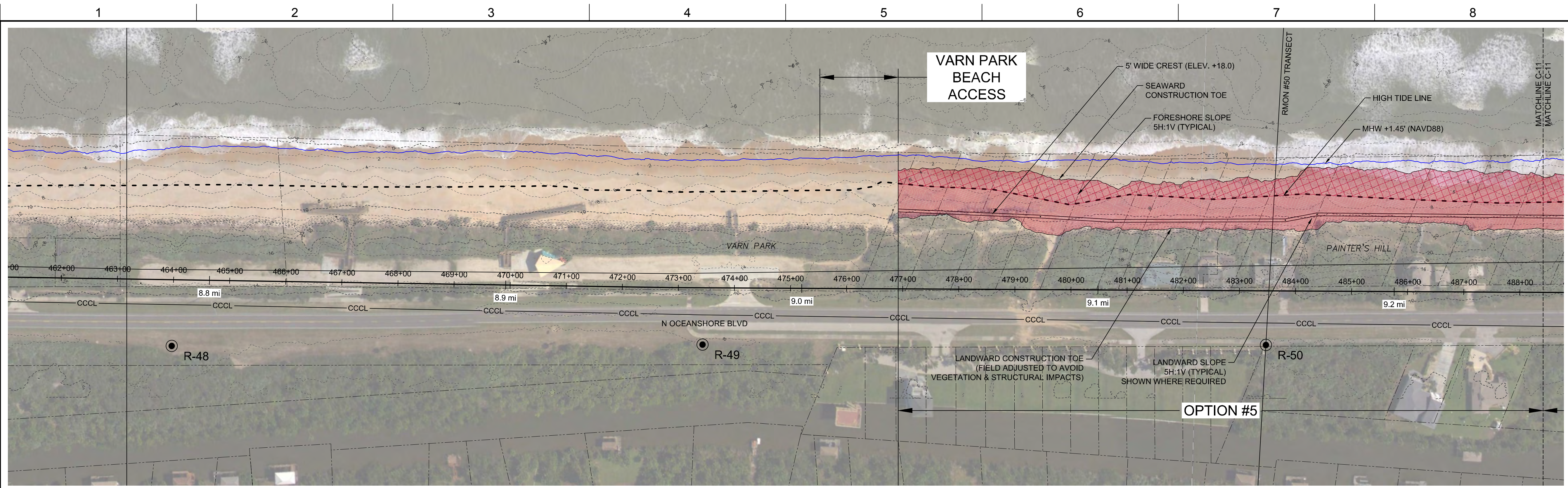
NO	ZONE	REVISIONS / SUBMISSIONS	DATE

PROJECT NO	C2016-079
DATE	MAY 15, 2017
DESIGNED	KRC
DRAWN	CAS
CHECKED	RLJ
REVIEWED	HVC
SCALE	AS SHOWN

DRAWING TITLE
**SITE PLAN
R-35 TO R-36**

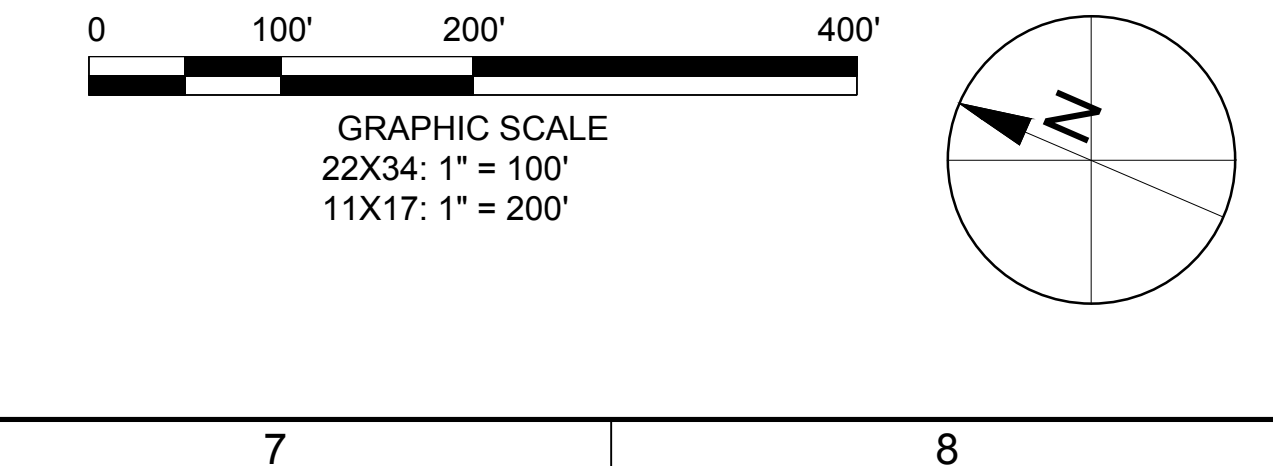
C-10

CATHY SHELL, 5/15/2017 5:11:40 PM, X:\sys\Projects\2016\079 Flagler Coastal Seawall\Permit DuneRepair\2016\079 P-FDEP R48_R68 Dune Site.dwg



LEGEND

	CONSTRUCTION BASELINE STATION
	EXISTING CONTOUR
	HIGH TIDE LINE
	MEAN HIGH WATER LINE
	DUNE FILL
	DUNE FILL BEYOND HIGH TIDE LINE
	RANGE MONUMENT



TAYLOR ENGINEERING INC.
 10151 DEERWOOD PARK BLVD
 BLDG 300, SUITE 300
 JACKSONVILLE, FLORIDA 32256
 (904)-731-7040

CERTIFICATE OF AUTHORIZATION # 4815

SEAL

KENNETH R. CRAIG II P.E. # 52605

PROJECT TITLE

**FLAGLER COUNTY
 EMERGENCY DUNE
 RESTORATION
 2017 POST-MATTHEW**

FLAGLER COUNTY, FLORIDA

SUNSHINE STATE ONE CALL OF
 FLORIDA
 SUNSHINE 811 - ALWAYS CALL 811
 BEFORE YOU DIG
 1-800-638-4097

NO	ZONE	REVISIONS / SUBMISSIONS	DATE

PROJECT NO	C2016-079
DATE	MAY 15, 2017
DESIGNED	KRC
DRAWN	CAS
CHECKED	RLJ
REVIEWED	HVC
SCALE	AS SHOWN

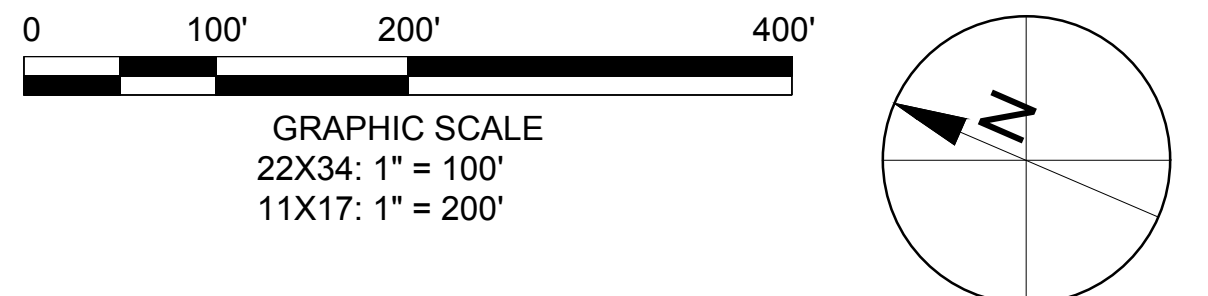
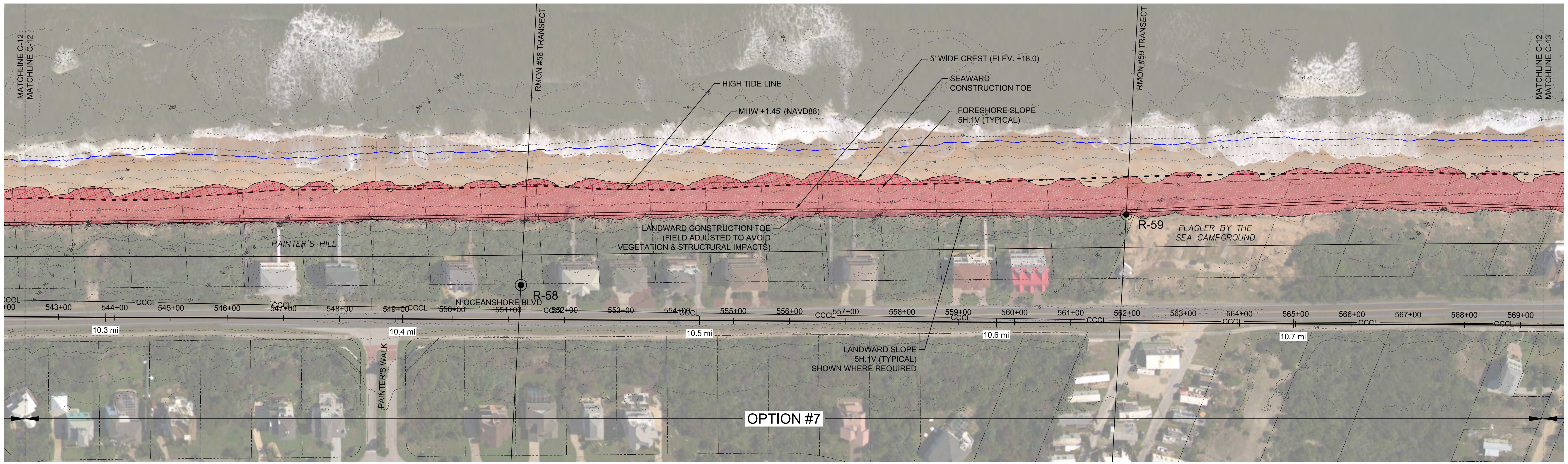
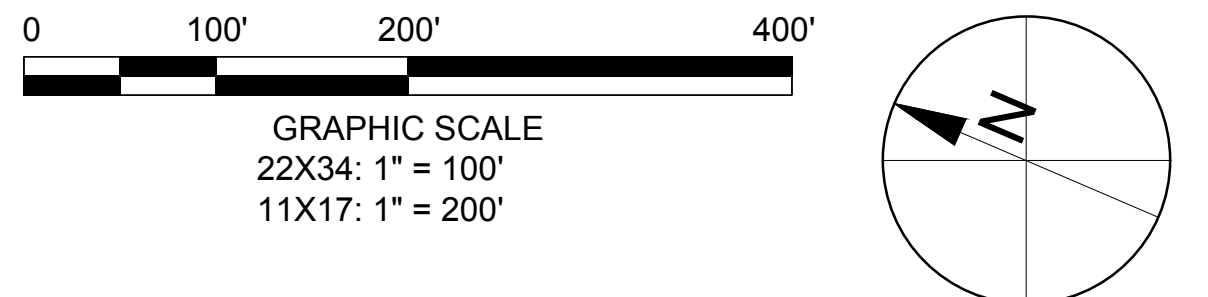
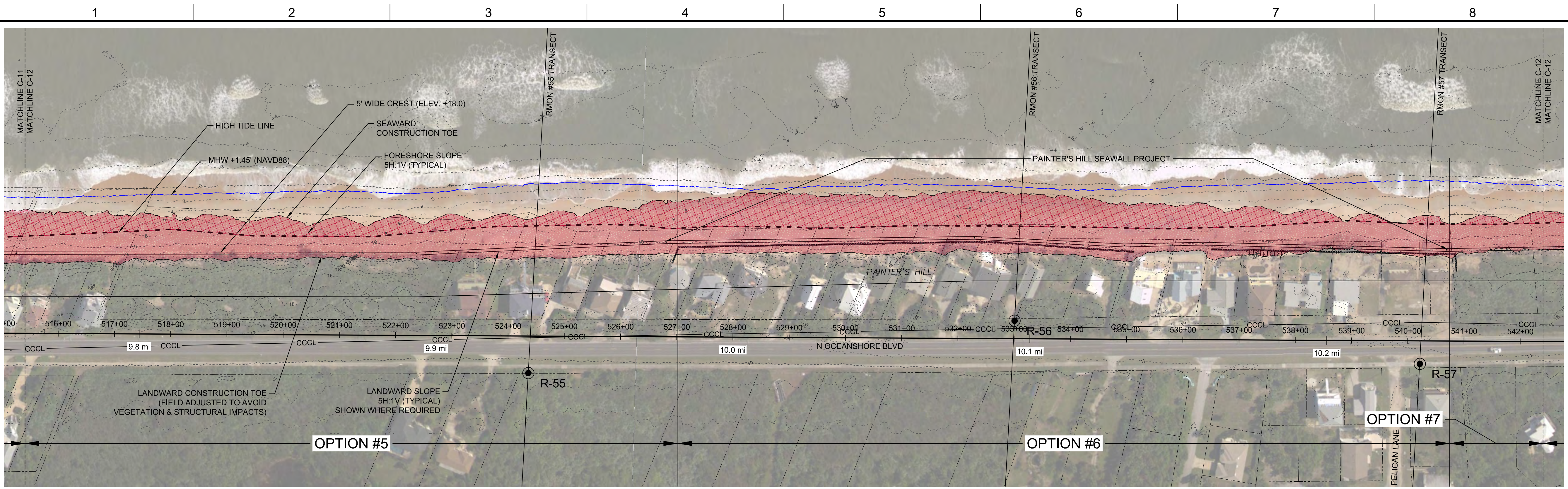
DRAWING TITLE

SITE PLAN R-48 TO R-54

C-11

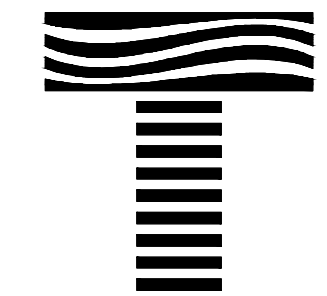
SHEET 13 OF 19

CATHY SHELL, 5/15/2017 5:11:48 PM, X:\Projects\2016\079 Flagler Coastal Seawall\Permit DuneRepair\2016\079-P-FDEP_R68_R68 Dune Site.dwg



LEGEND

	CONSTRUCTION BASELINE STATION
	EXISTING CONTOUR
	HIGH TIDE LINE
	MEAN HIGH WATER LINE
	DUNE FILL
	DUNE FILL BEYOND HIGH TIDE LINE
	RANGE MONUMENT



TAYLOR ENGINEERING INC.
 10151 DEERWOOD PARK BLVD
 BLDG 300, SUITE 300
 JACKSONVILLE, FLORIDA 32256
 (904)-731-7040

CERTIFICATE OF AUTHORIZATION # 4815

SEAL

KENNETH R. CRAIG II P.E.# 52605

PROJECT TITLE

FLAGLER COUNTY EMERGENCY DUNE RESTORATION 2017 POST-MATTHEW

FLAGLER COUNTY, FLORIDA

SUNSHINE STATE ONE CALL OF FLORIDA
 SUNSHINE 811 - ALWAYS CALL 811 BEFORE YOU DIG
 1-800-638-4097

NO	ZONE	REVISIONS / SUBMISSIONS	DATE

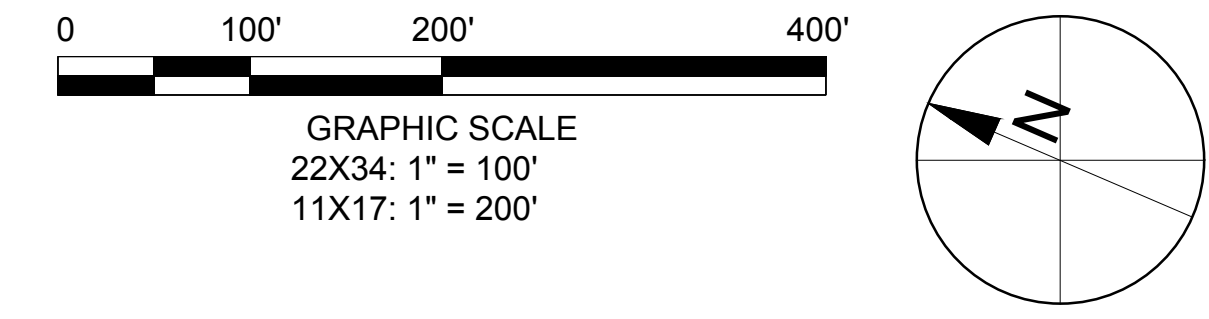
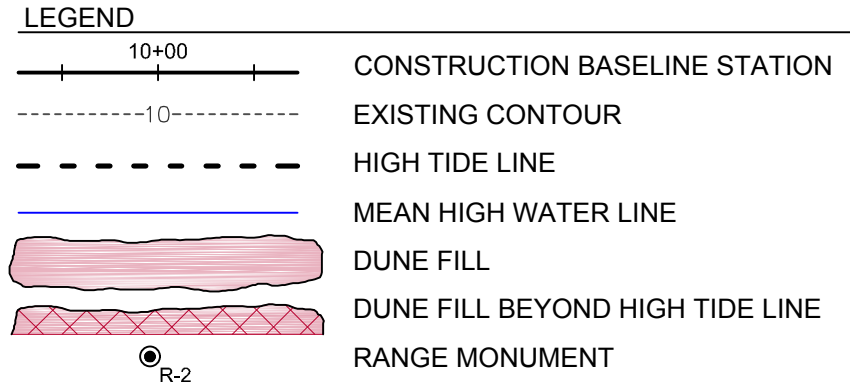
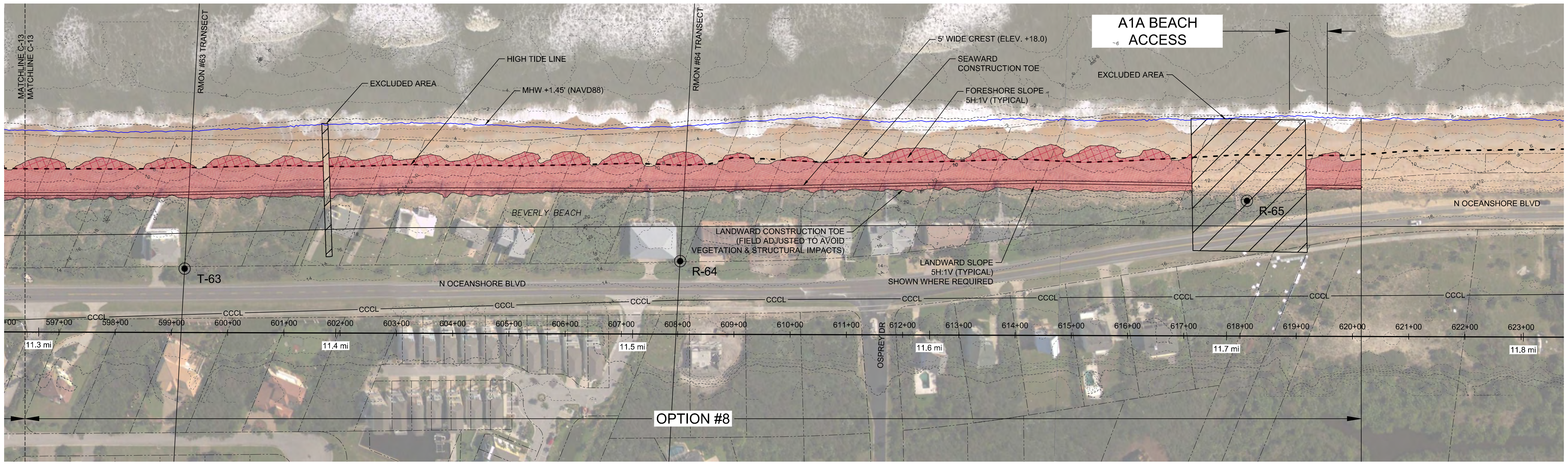
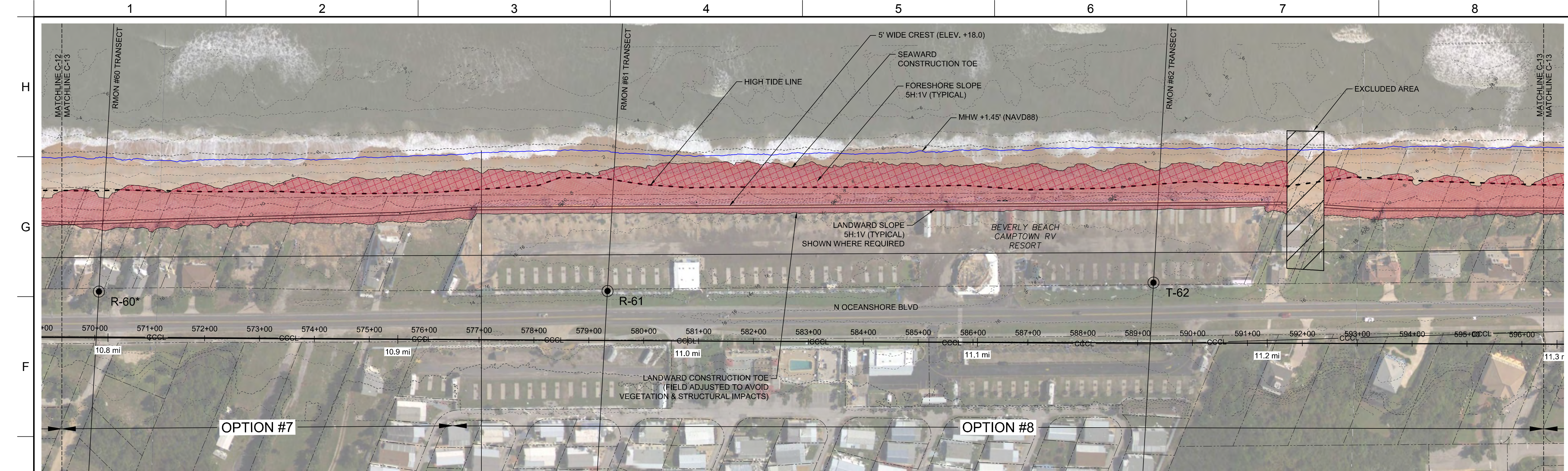
PROJECT NO	C2016-079
DATE	MAY 15, 2017
DESIGNED	KRC
DRAWN	CAS
CHECKED	RLJ
REVIEWED	HVC
SCALE	AS SHOWN

DRAWING TITLE

SITE PLAN R-55 TO R-59

C-12

SHEET 14 OF 19



TAYLOR ENGINEERING INC.
 10151 DEERWOOD PARK BLVD
 BLDG 300, SUITE 300
 JACKSONVILLE, FLORIDA 32256
 (904)-731-7040

CERTIFICATE OF AUTHORIZATION # 4815

SEAL

KENNETH R. CRAIG II P.E. # 52605

PROJECT TITLE

**FLAGLER COUNTY
 EMERGENCY DUNE
 RESTORATION
 2017 POST-MATTHEW**

FLAGLER COUNTY, FLORIDA

SUNSHINE STATE ONE CALL OF
 FLORIDA
 SUNSHINE 811 - ALWAYS CALL 811
 BEFORE YOU DIG
 1-800-638-4097

NO	ZONE	REVISIONS / SUBMISSIONS	DATE

PROJECT NO	C2016-079
DATE	MAY 15, 2017
DESIGNED	KRC
DRAWN	CAS
CHECKED	RLJ
REVIEWED	HVC
SCALE	AS SHOWN

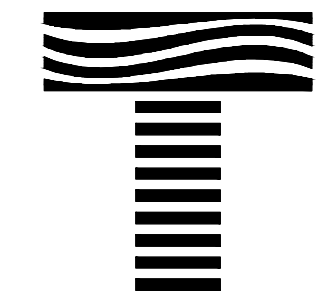
DRAWING TITLE

SITE PLAN R-60 TO R-65

C-13

SHEET 15 OF 19

CATHY SHELL, 5/15/2017 5:11:58 PM, X:\ays\Projects\C2016-079 Flagler Coastal Seawall\Permit DuneRepair\C2016-079-P-FDEP_R68_R68 Dune Site.dwg



TAYLOR ENGINEERING INC.
 10151 DEERWOOD PARK BLVD
 BLDG 300, SUITE 300
 JACKSONVILLE, FLORIDA 32256
 (904)-731-7040

CERTIFICATE OF AUTHORIZATION # 4815

SEAL

KENNETH R. CRAIG II P.E. # 52605

PROJECT TITLE

**FLAGLER COUNTY
 EMERGENCY DUNE
 RESTORATION
 2017 POST-MATTHEW**

FLAGLER COUNTY, FLORIDA

SUNSHINE STATE ONE CALL OF
 FLORIDA
 SUNSHINE 811 - ALWAYS CALL 811
 BEFORE YOU DIG
 1-800-638-4097

NO	REVISIONS / SUBMISSIONS	DATE		
			ZONE	

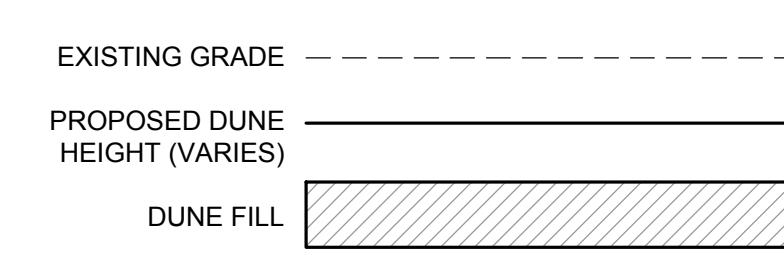
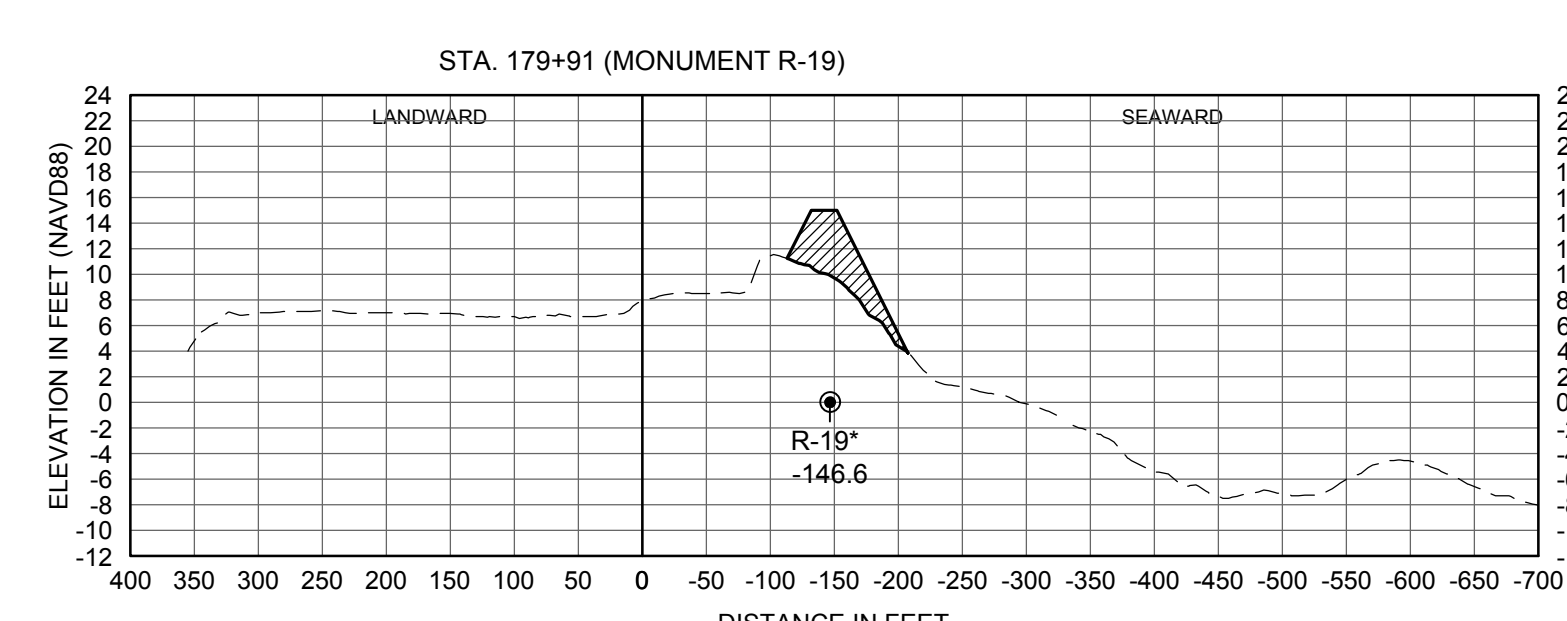
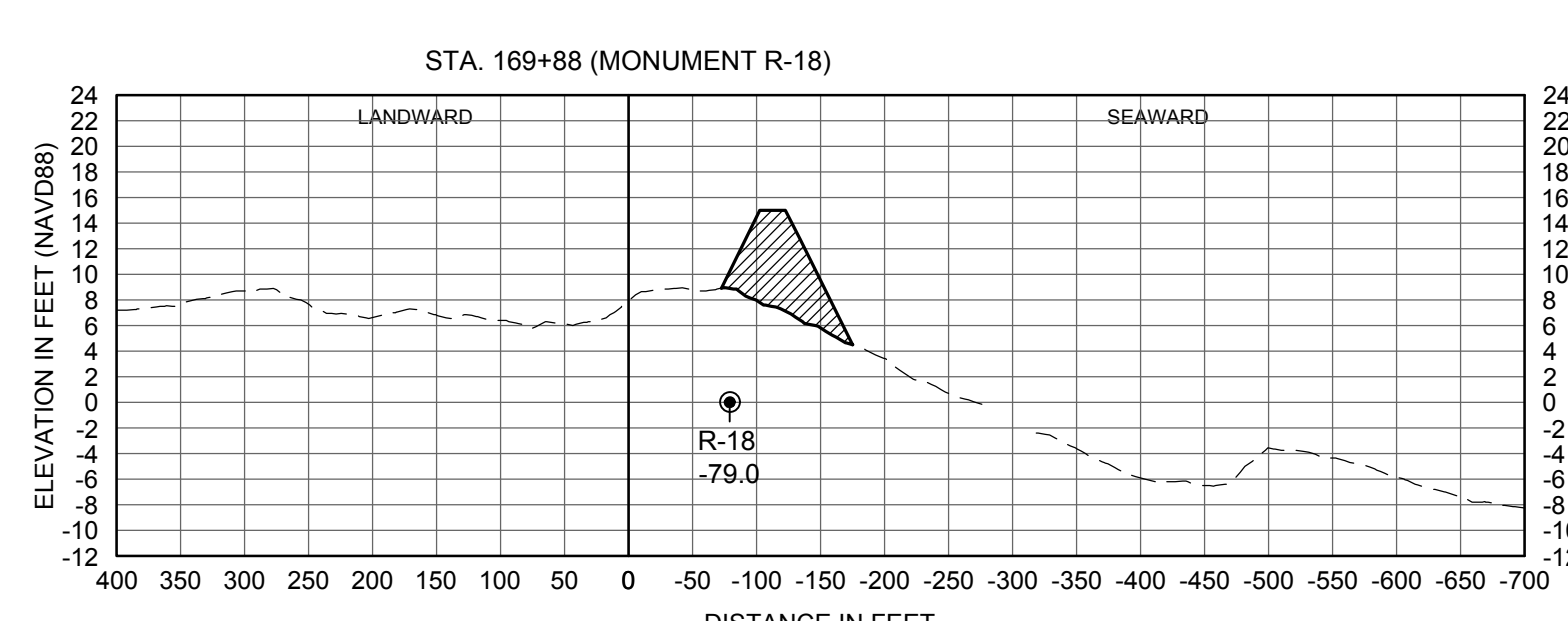
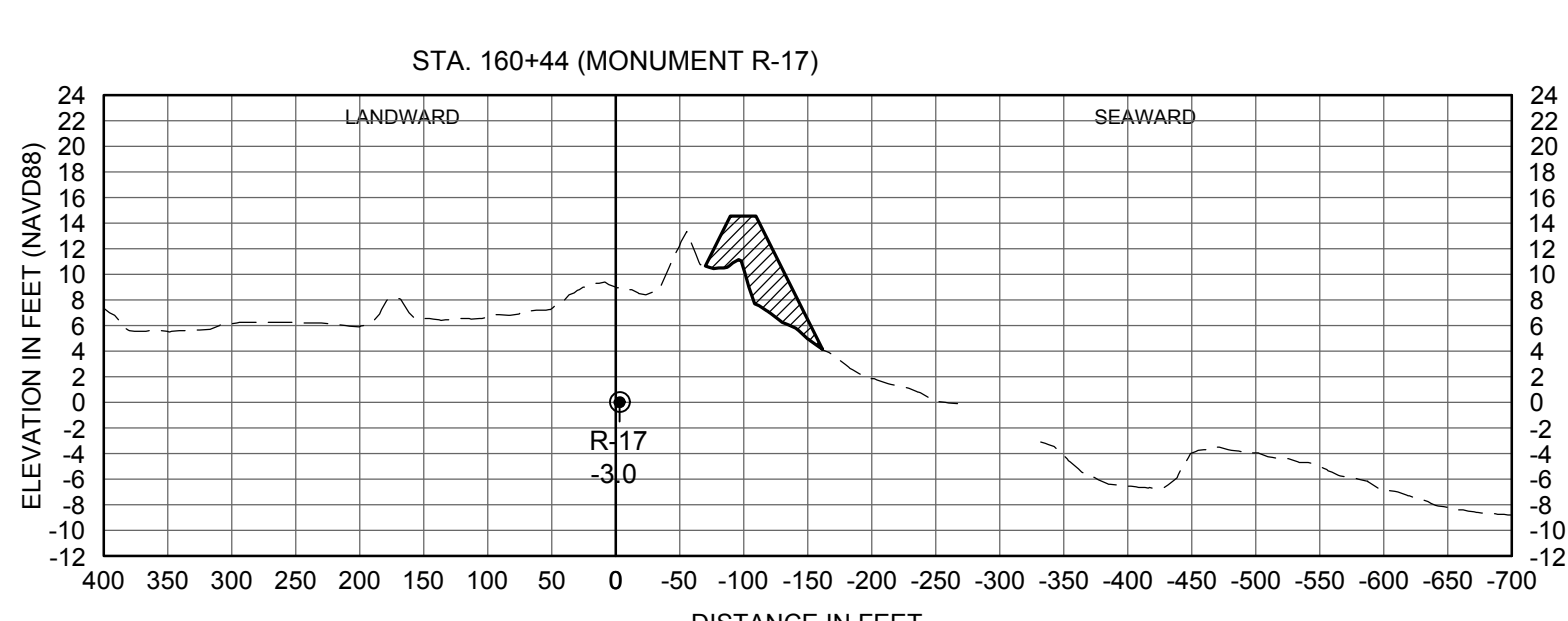
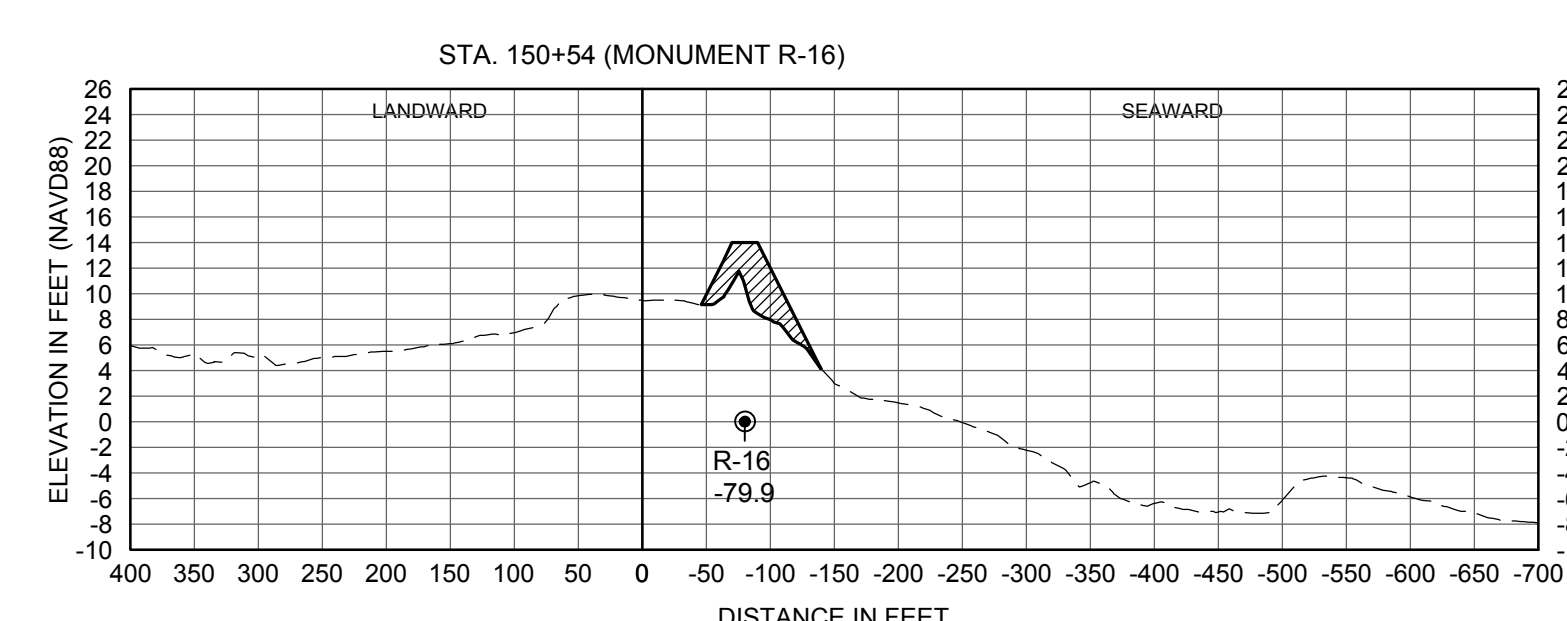
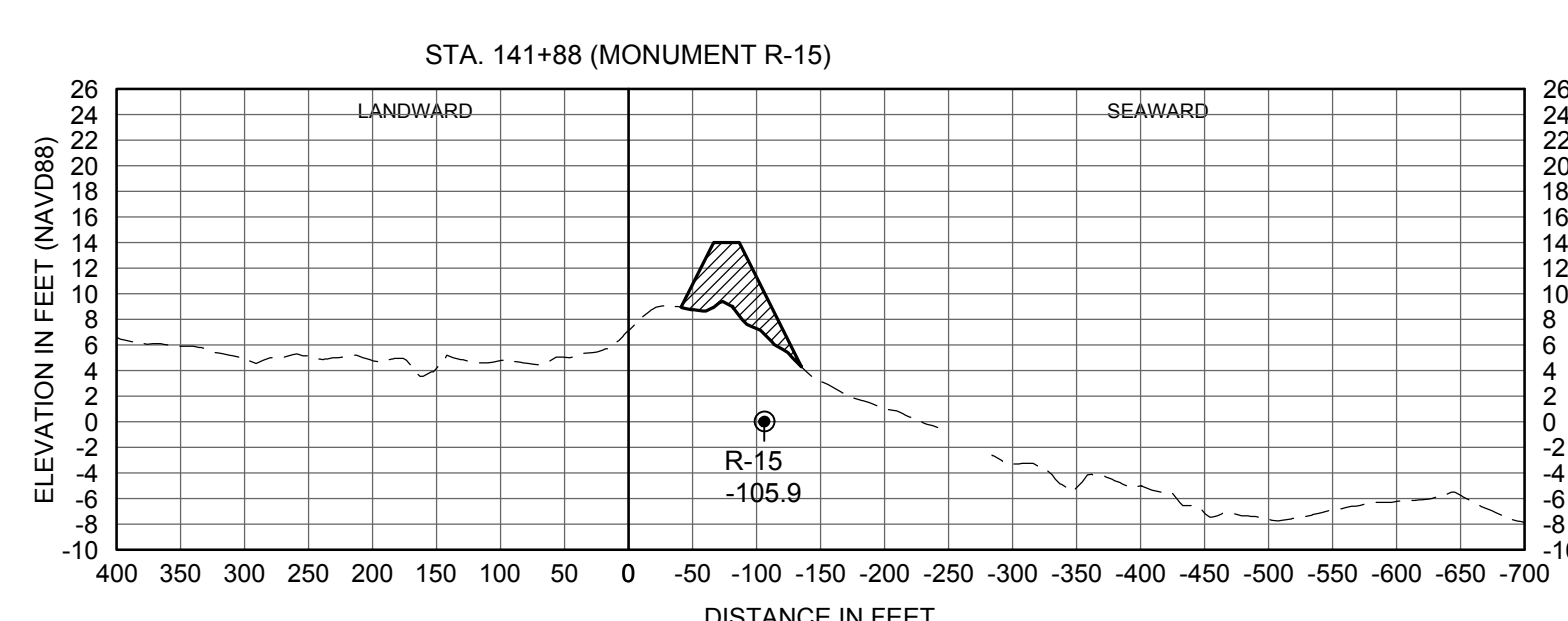
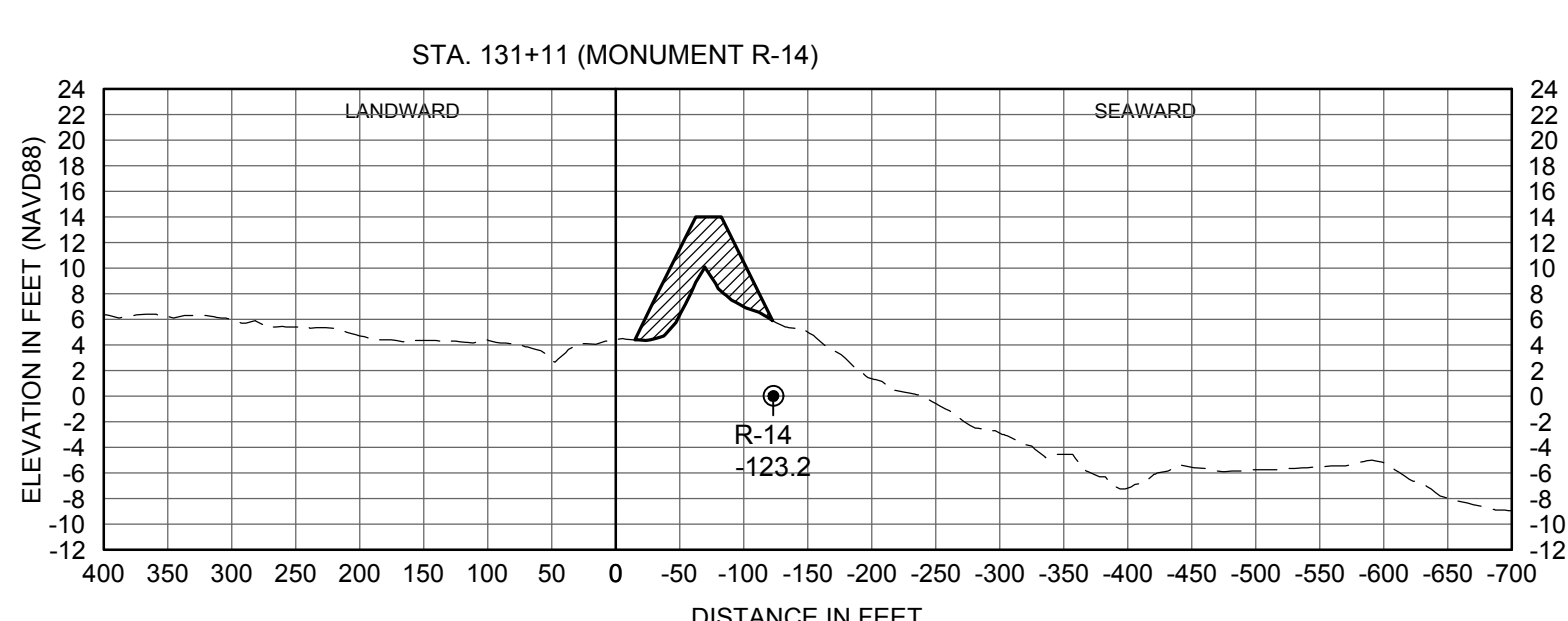
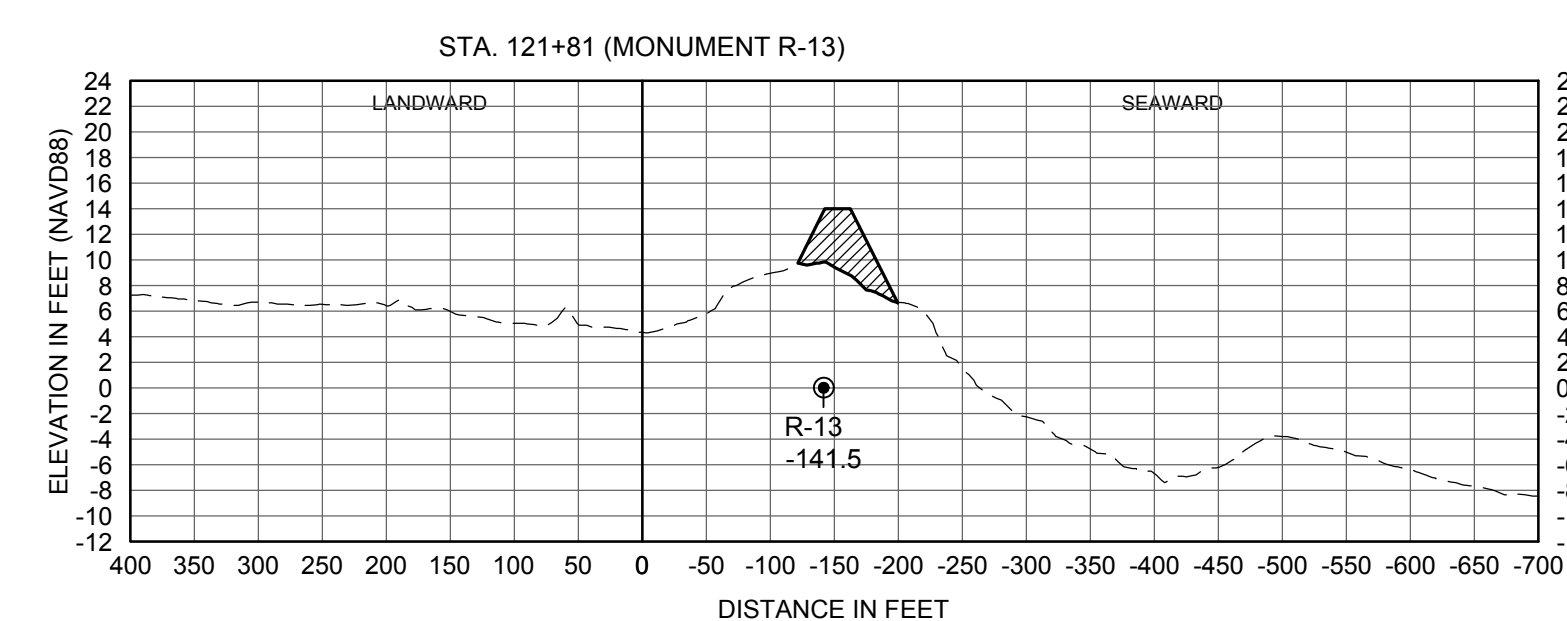
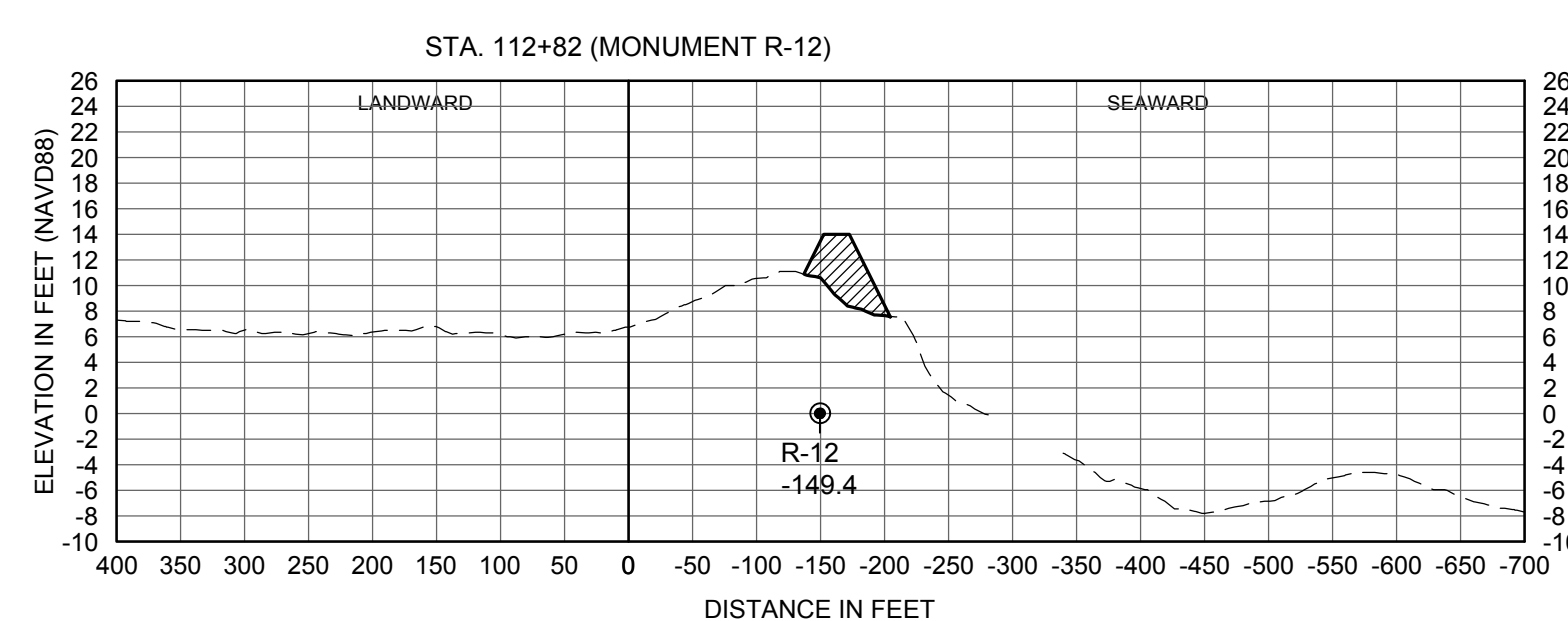
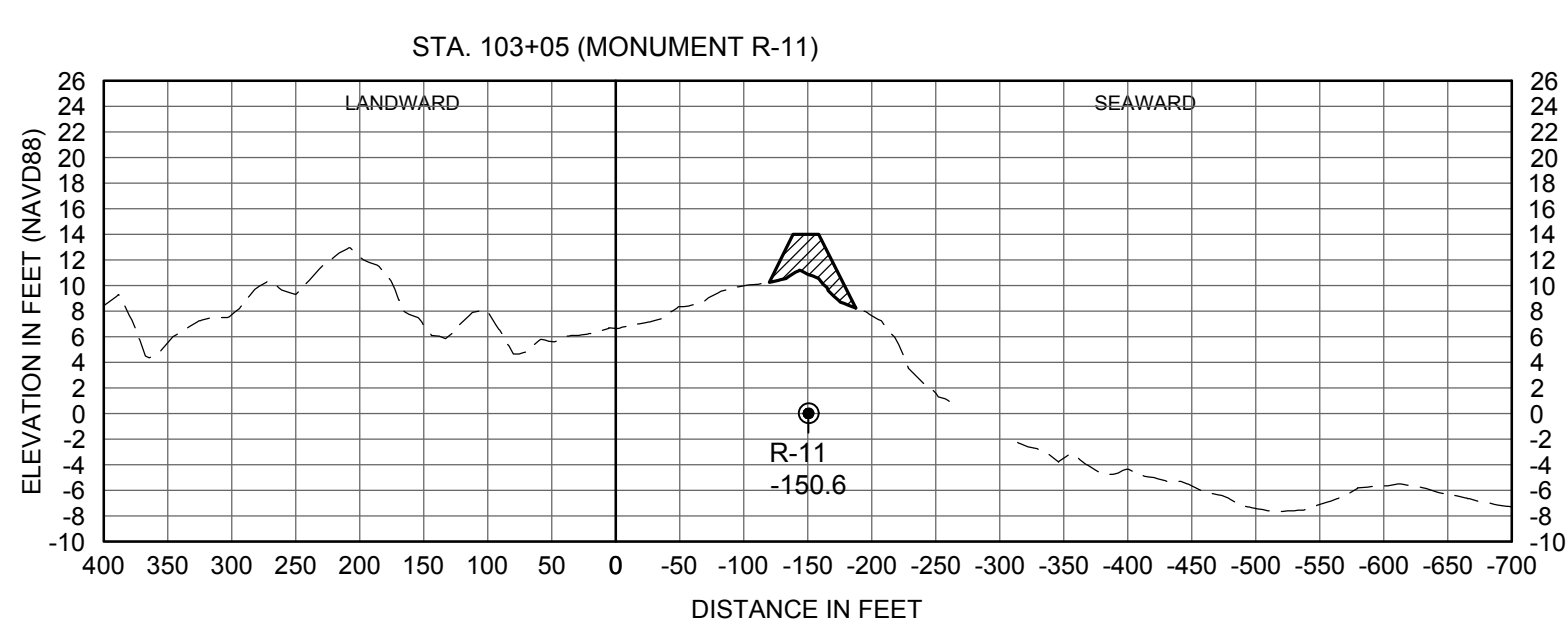
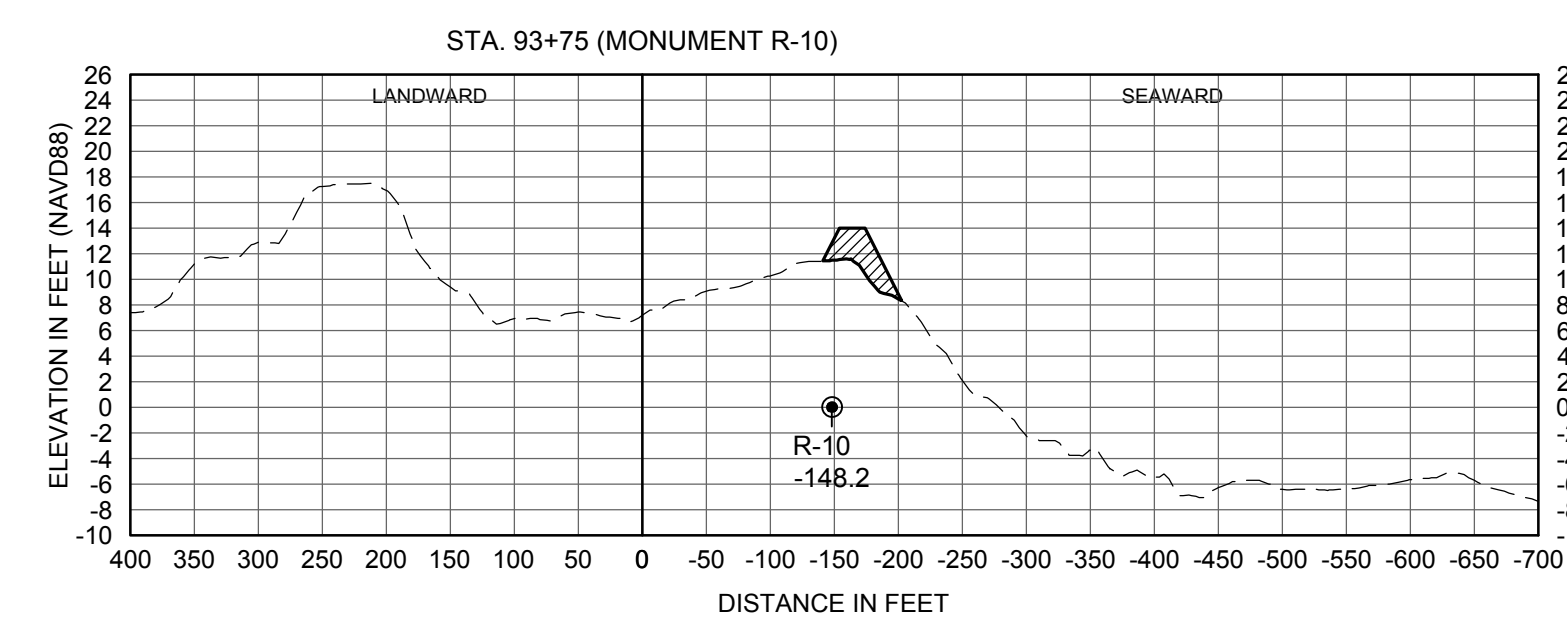
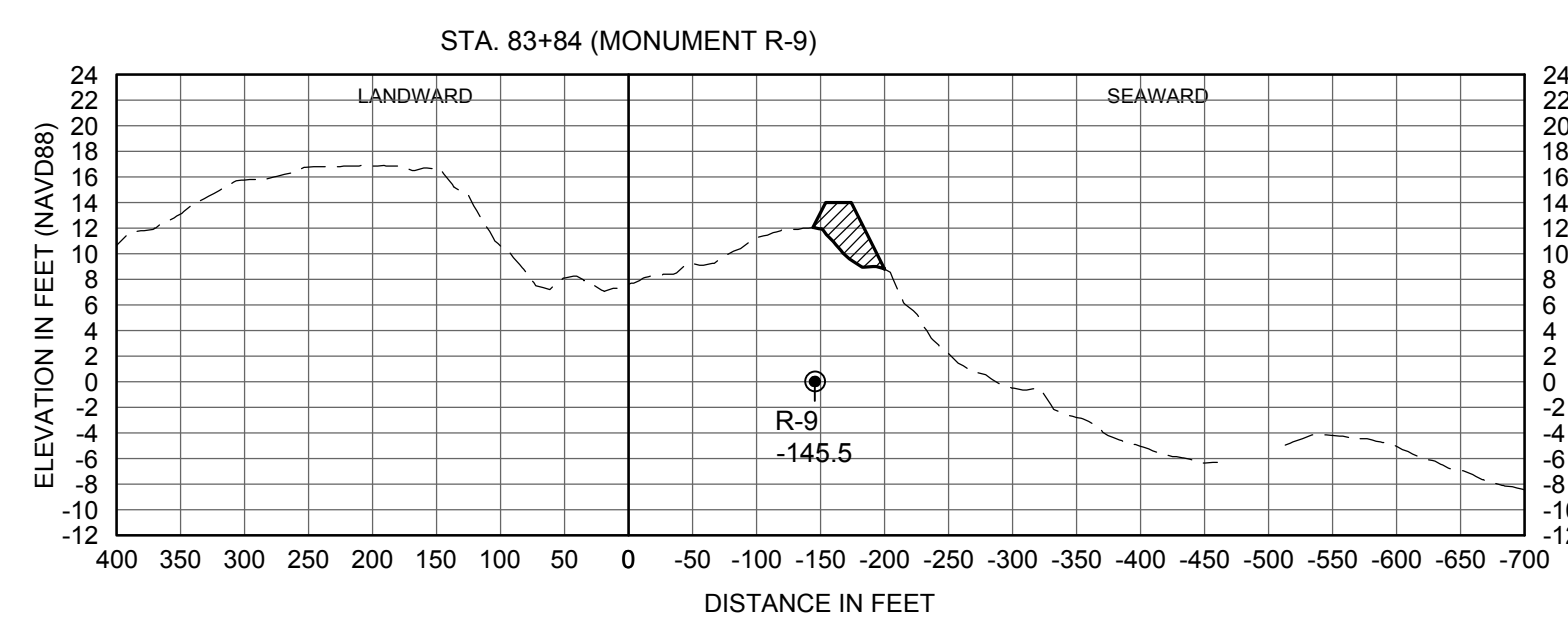
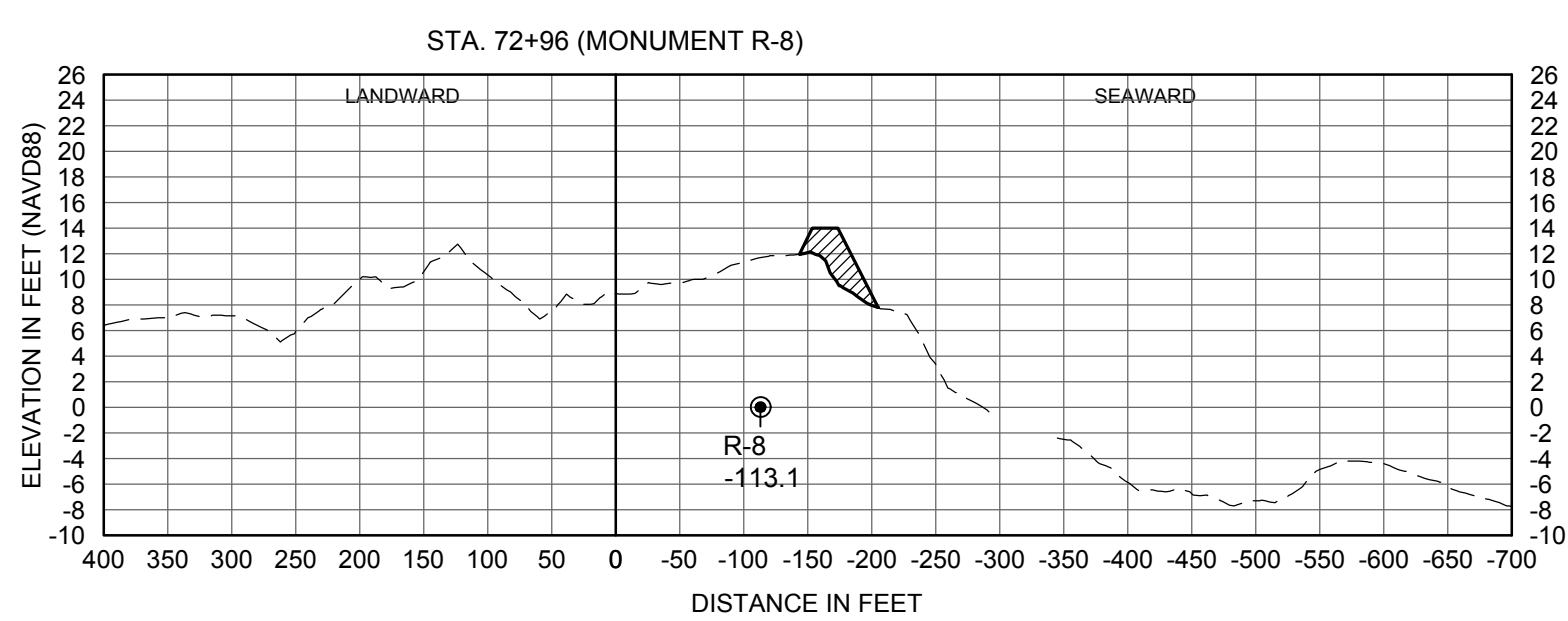
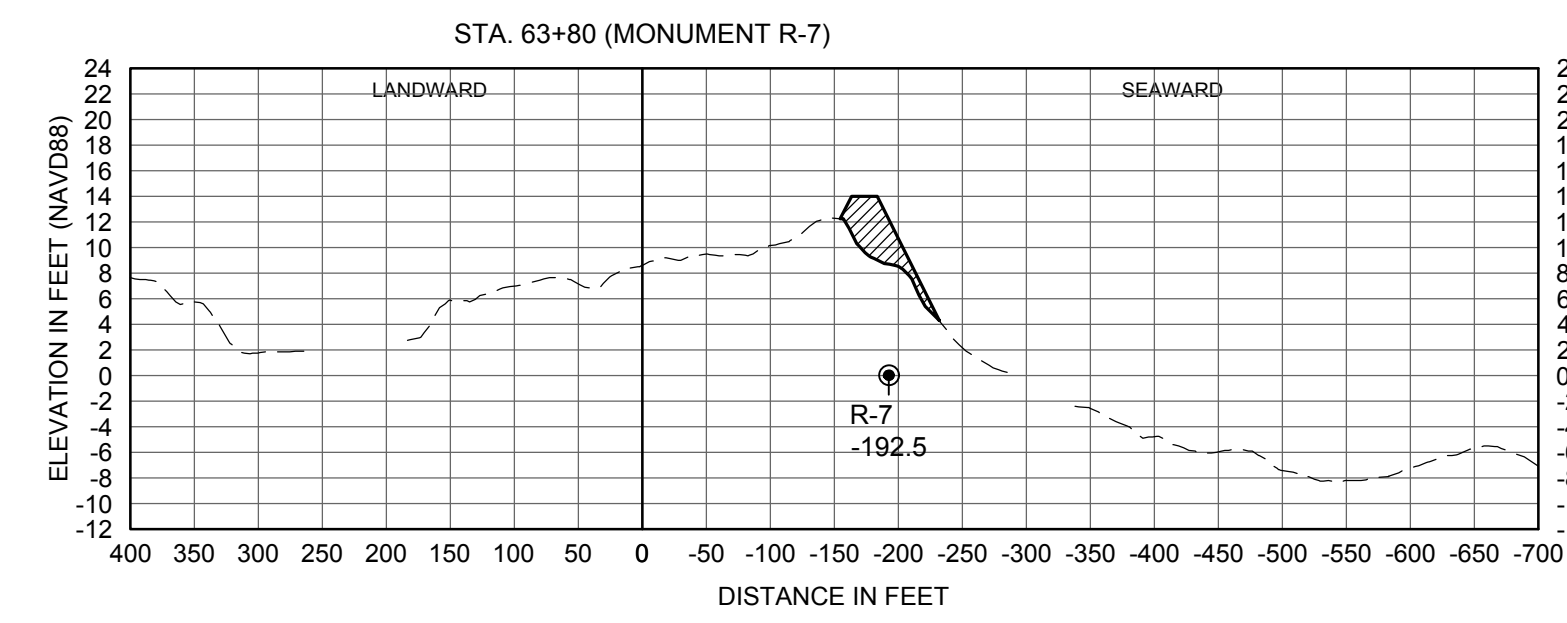
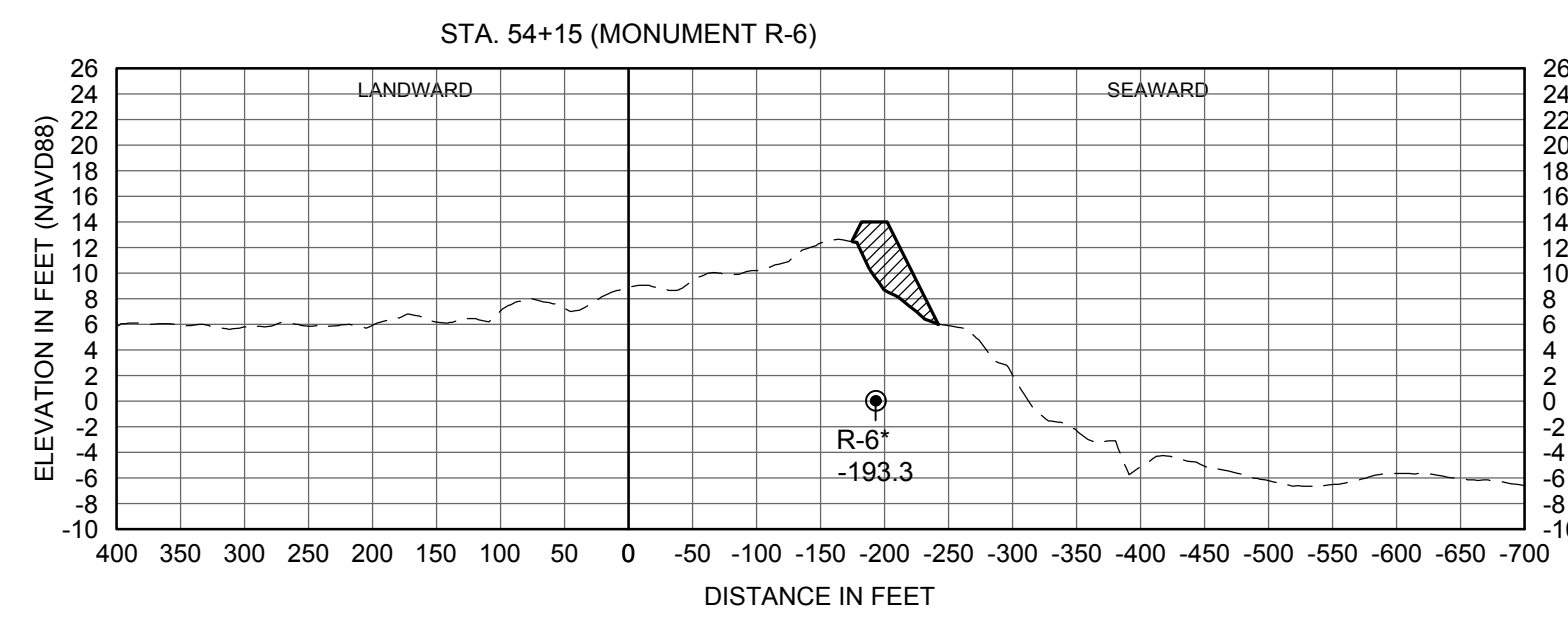
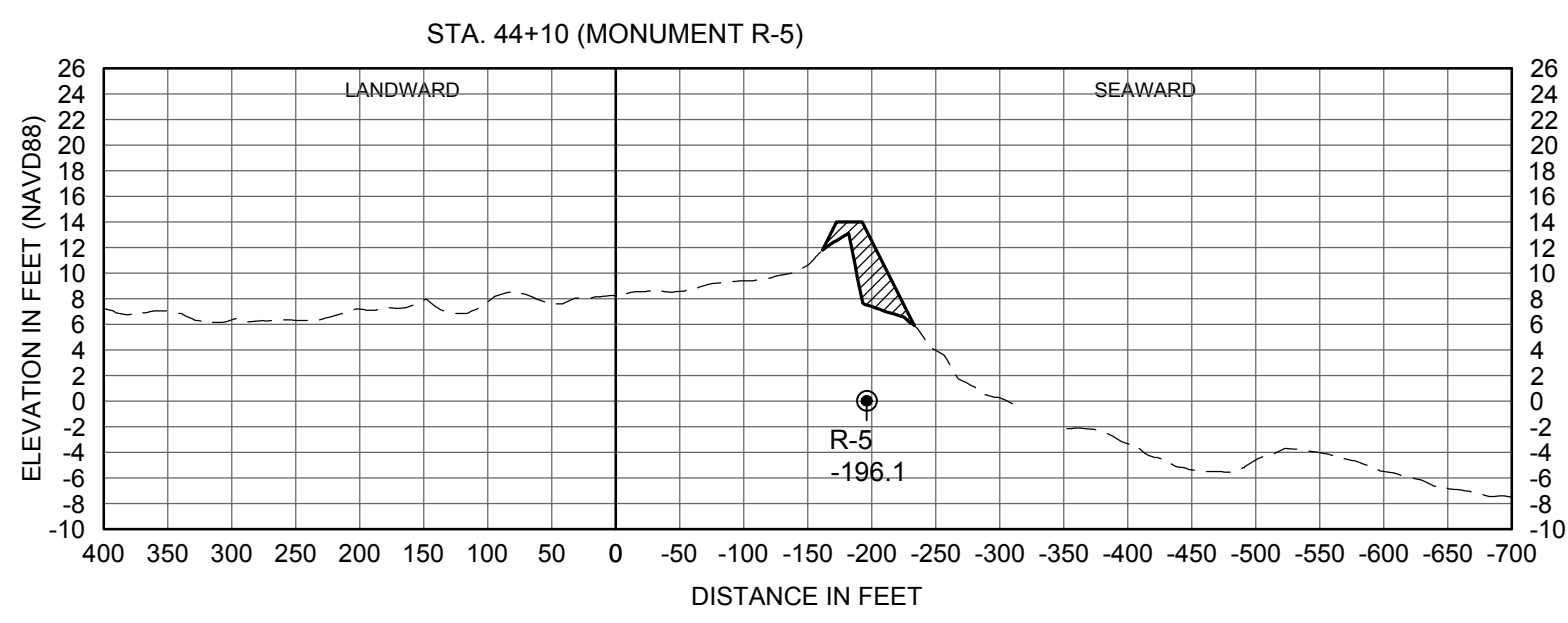
PROJECT NO	C2016-079
DATE	MAY 15, 2017
DESIGNED	KRC
DRAWN	CAS
CHECKED	RLJ
REVIEWED	HVC
SCALE	AS SHOWN

DRAWING TITLE
SECTIONS R-5 TO R-19

C-14

SHEET 16 OF 19

CATHY SHELL, 5/15/2017 5:12:08 PM, X:\sys\Projects\C2016-079 Flagler Coastal SeawallPermit DuneRepair\C2016-079-P-4DEP-R3-R06 Dune Sections.dwg



TYPICAL SECTIONS

